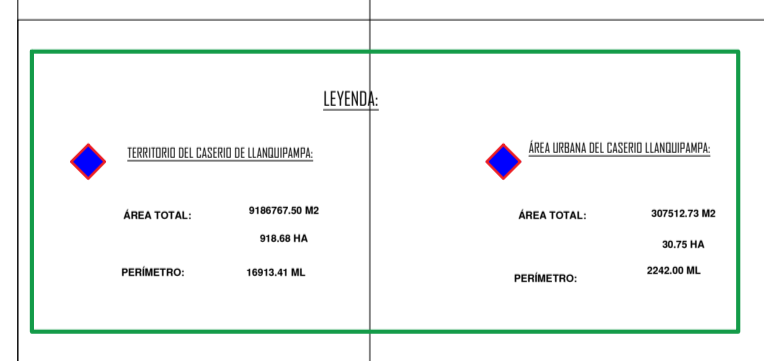


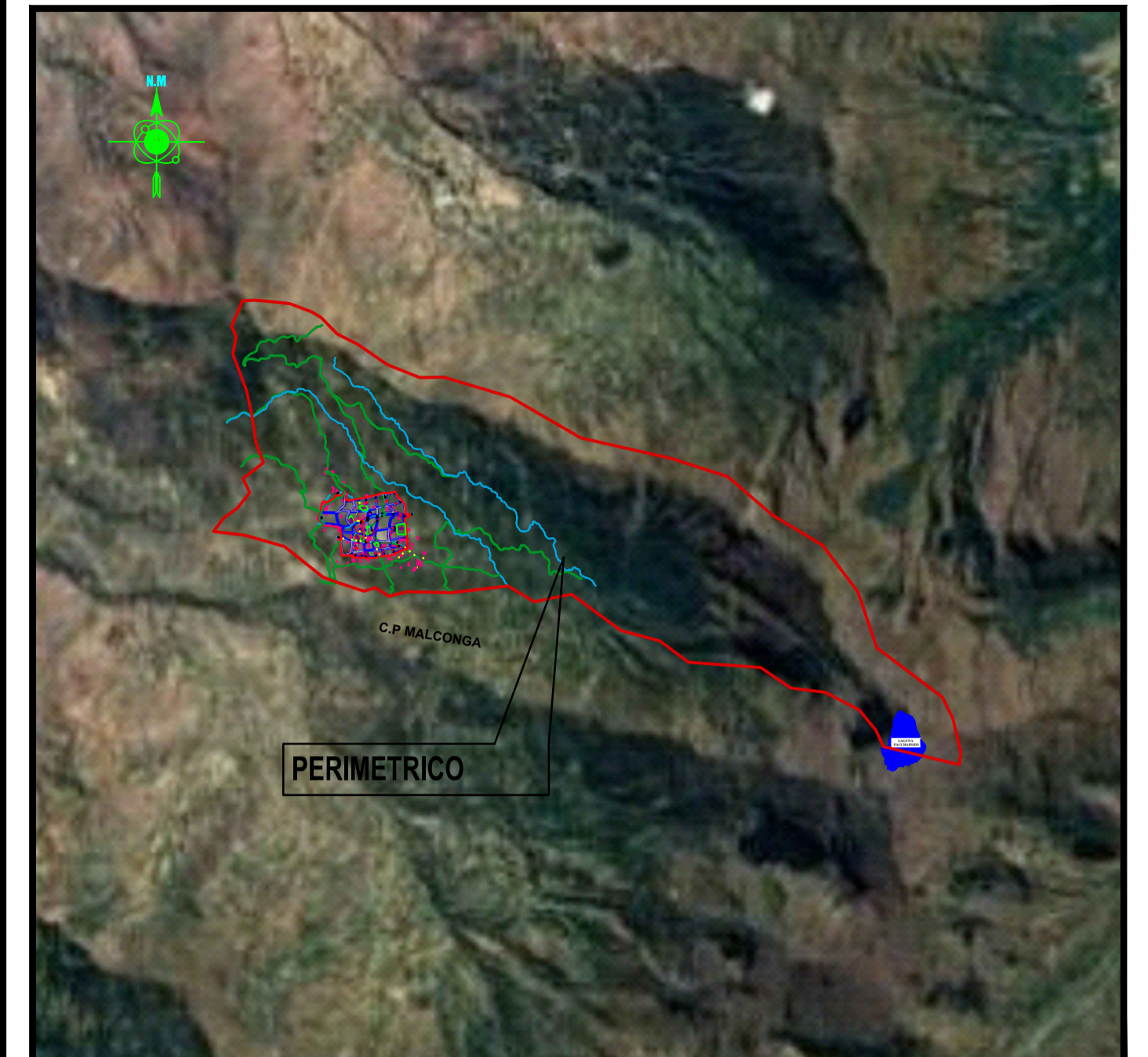
VERTICE	LADO	ORIENTACION	COORDENADAS	OTRO	NOTAS
P1	P1-P2	188°12'27"	376465.33	890254.38	
P2	P2-P3	308.45	376202.60	890264.80	
P3	P3-P4	209°33'56"	376037.34	890173.58	
P4	P4-P5	114°46'56"	375426.36	890128.81	
P5	P5-P6	201°30'26"	375166.09	890179.29	
P6	P6-P7	158°30'08"	374850.09	890204.72	
P7	P7-P8	325.05	374445.35	890233.17	
P8	P8-P9	254.90	373747.49	890208.56	
P9	P9-P10	484.55	373255.67	890144.52	
P10	P10-P11	372.08	372425.74	890082.84	
P11	P11-P12	157.24	371611.87	890032.02	
P12	P12-P13	153.95	370722.22	890004.58	
P13	P13-P14	89.85	369263.17	890028.95	
P14	P14-P15	201.83	368211.87	890039.28	
P15	P15-P16	104.16	367552.97	890047.69	
P16	P16-P17	432.86	367141.77	890051.05	
P17	P17-P18	348.85	366724.27	890074.17	
P18	P18-P19	263.97	366292.29	890086.84	
P19	P19-P20	164.41	365845.47	890099.92	
P20	P20-P21	146.20	365378.76	890102.93	
P21	P21-P22	165.62	364902.24	890105.91	
P22	P22-P23	130.11	364416.11	890108.78	
P23	P23-P24	217.82	363920.27	890111.48	
P24	P24-P25	100.84	363424.60	890114.15	
P25	P25-P26	245.61	362929.09	890116.59	
P26	P26-P27	204.70	362433.74	890118.83	
P27	P27-P28	326.60	361938.55	890120.87	
P28	P28-P29	148.44	361443.52	890122.64	
P29	P29-P30	89.73	360948.65	890124.16	
P30	P30-P31	123.03	360453.94	890125.45	
P31	P31-P32	107.15	359959.39	890126.48	
P32	P32-P33	89.69	359464.99	890127.24	
P33	P33-P34	207.82	358970.74	890127.73	
P34	P34-P35	108.18	358476.64	890127.93	
P35	P35-P36	92.48	357982.69	890127.85	
P36	P36-P37	186.26	357488.90	890127.49	
P37	P37-P38	108.61	356995.36	890126.86	
P38	P38-P39	208.67	356502.07	890125.88	
P39	P39-P40	207.72	356008.93	890124.56	
P40	P40-P41	188.00	355515.94	890122.91	
P41	P41-P42	88.88	355023.16	890120.97	
P42	P42-P43	697.06	354530.50	890118.77	
P43	P43-P44	701.06	354038.04	890116.33	
P44	P44-P45	493.27	353545.77	890113.68	
P45	P45-P46	492.40	353053.69	890110.84	
P46	P46-P47	491.53	352561.80	890107.82	
P47	P47-P48	490.66	352070.10	890104.64	
P48	P48-P49	489.79	351578.59	890101.31	
P49	P49-P50	488.92	351087.27	890097.84	
P50	P50-P51	488.05	350596.14	890094.24	
P51	P51-P52	487.18	350105.20	890090.51	
P52	P52-P53	486.31	349614.45	890086.65	
P53	P53-P54	485.44	349123.88	890082.66	
P54	P54-P55	484.57	348633.49	890078.54	
P55	P55-P56	483.70	348143.27	890074.29	
P56	P56-P57	482.83	347653.22	890069.91	
P57	P57-P58	481.96	347163.33	890065.40	
P58	P58-P59	481.09	346673.60	890060.77	
P59	P59-P60	480.22	346184.13	890056.02	



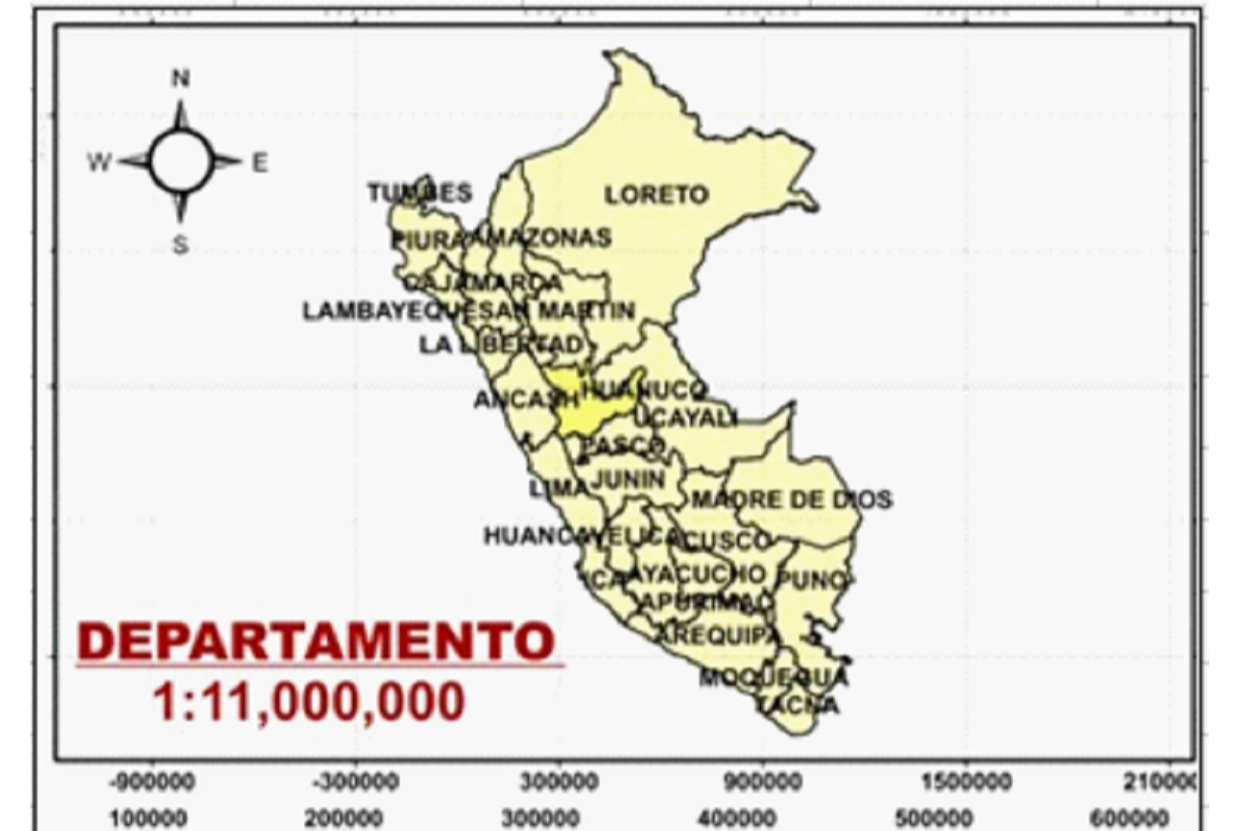
CENTROIDE

- CORDENADA NORTE (N) WGS-84: 8902963.791
- CORDENADA ESTE (E) WGS-84: 378224.161
- ELEVACION (EGM08): 8153.000

ESCALA GRAFICA



ESQUEMA DE LOCALIZACION



MUNICIPALIDAD DEL CASERIO DE LLANQUIPAMPA

PROYECTO: "ESQUEMA DE ACONDICIONAMIENTO URBANO DEL CASERIO DE LLANQUIPAMPA 2023 - 2033"

PLANO: PLANO DE UBICACION Y LOCALIZACION

PROYECTISTA: CASERIO DE LLANQUIPAMPA

OPD: HUANCAYO
PROV: HUANCAYO
DET: AMARILIS
LOCAL: C.P. LLANQUIPAMPA

ESCALA: INDICADA

FECHA: ENERO-2024

DIBUJO: YONEL MAIZ MILLAN