

LEYENDA:

TERRITORIO DEL CASERIO DE LLANQUIPAMPA:

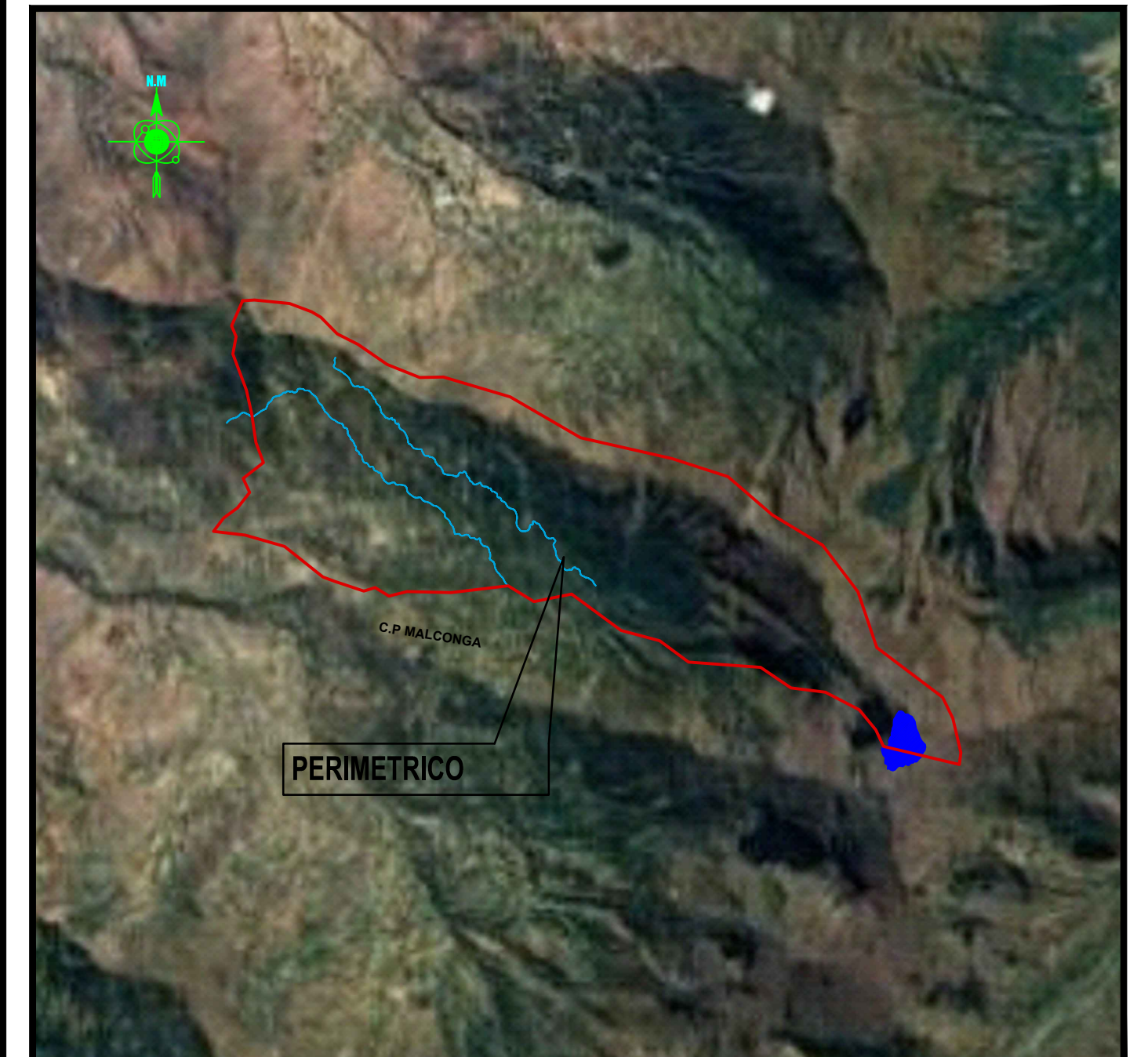
ÁREA TOTAL: **9186767.50 M2**

PERÍMETRO: **16913.41 ML**

LÍMITES CAS:

RÍO PACCHA:

LAGUNA:



ESQUEMA DE LOCALIZACION
ESCALA 1/50000

PUNTO GEODESICO DE ORDEN "C"

- CORDENADA NORTE (N) WGS-84: 8902831.764
- CORDENADA ESTE (E) WGS-84: 372682.617
- ELEVACION (EGM08): 8615.560

CUADRO DE CONSTRUCCION

VERTICE	LADO	DIST.	ANGULO	ESTE	NORTE
P1	P1 - P2	173.43	188°12'	376485.33	8901564.38
P2	P2 - P3	308.45	151°11'45"	376292.65	8901580.50
P3	P3 - P4	609.44	209°53'56"	376037.34	8901753.58
P4	P4 - P5	302.63	147°48'52"	375429.56	8901798.61
P5	P5 - P6	338.19	201°36'56"	375186.05	8901978.29
P6	P6 - P7	515.89	158°30'6"	374859.09	8902064.72
P7	P7 - P8	325.05	227°13'55"	374443.35	8902370.17
P8	P8 - P9	254.90	137°37'49"	374124.19	8902308.56
P9	P9 - P10	484.55	218°23'56"	373906.73	8902441.52
P10	P10 - P11	372.08	171°37'49"	373425.74	8902382.84
P11	P11 - P12	157.24	195°11'18"	373053.78	8902392.02
P12	P12 - P13	135.99	134°42'22"	372901.06	8902354.58
P13	P13 - P14	99.85	229°26'31"	372785.93	8902426.95
P14	P14 - P15	261.67	144°21'8"	372690.58	8902397.28
P15	P15 - P16	104.16	177°55'39"	372442.23	8902479.69
P16	P16 - P17	412.86	161°44'7"	372344.62	8902516.05
P17	P17 - P18	346.85	202°51'24"	372022.39	8902774.17
P18	P18 - P19	268.97	188°59'20"	371698.71	8902868.84
P19	P19 - P20	140.43	89°45'14"	371421.66	8903003.92
P20	P20 - P21	146.20	163°7'6"	371506.36	8903012.93
P21	P21 - P22	165.62	195°53'21"	371624.61	8903098.91
P22	P22 - P23	130.17	243°21'14"	371726.78	8903229.26
P23	P23 - P24	217.82	102°17'40"	371671.22	8903346.98
P24	P24 - P25	180.84	253°26'20"	371843.89	8903479.75
P25	P25 - P26	245.61	166°57'39"	371779.09	8903648.59
P26	P26 - P27	204.70	184°49'5"	371745.08	8903891.83
P27	P27 - P28	325.62	187°38'2"	371699.81	8904091.47
P28	P28 - P29	148.44	148°52'48"	371586.25	8904396.64
P29	P29 - P30	98.73	213°22'15"	371613.83	8904542.49
P30	P30 - P31	123.03	136°45'43"	371575.79	8904633.60
P31	P31 - P32	107.15	173°40'18"	371619.03	8904748.78
P32	P32 - P33	99.60	120°48'17"	371667.52	8904844.34
P33	P33 - P34	297.82	170°18'53"	371766.89	8904851.12
P34	P34 - P35	198.19	165°36'42"	372063.20	8904821.10
P35	P35 - P36	92.49	170°55'0"	372249.23	8904752.75
P36	P36 - P37	196.26	164°21'37"	372329.25	8904706.40
P37	P37 - P38	196.67	198°34'4"	372466.29	8904565.90
P38	P38 - P39	296.67	172°43'1"	372641.29	8904476.16
P39	P39 - P40	297.12	192°35'4"	372885.99	8904308.42
P40	P40 - P41	198.60	202°57'42"	373161.77	8904197.85
P41	P41 - P42	588.86	162°22'39"	373360.33	8904201.71
P42	P42 - P43	687.09	166°18'14"	373924.92	8904034.39
P43	P43 - P44	791.06	187°22'27"	374518.73	8903688.74
P44	P44 - P45	495.22	175°01'7"	375290.04	8903513.08
P45	P45 - P46	492.40	157°22"	375781.49	8903361.50
P46	P46 - P47	495.55	189°45'58"	376134.29	8903039.82
P47	P47 - P48	493.95	158°8'40"	376558.95	8902784.41
P48	P48 - P49	495.40	161°33'3"	376857.04	8902390.55
P49	P49 - P50	696.47	214°18'51"	377015.63	8901921.21
P50	P50 - P51	198.51	152°50'39"	377571.75	8901501.92
P51	P51 - P52	298.44	167°19'35"	377658.24	8901323.24
P52	P52 - P53	98.82	158°48'7"	377726.16	8901033.64
P53	P53 - P54	655.50	84°40'36"	377712.33	8900934.79
P54	P54 - P55	155.47	131°31'11"	377074.59	8901086.32
P55	P55 - P56	196.13	191°51'40"	377001.23	8901223.40
P56	P56 - P57	146.55	222°46'59"	376875.12	8901373.61
P57	P57 - P58	97.77	115°34'42"	376729.73	8901391.99
P58	P58 - P59	60.72	215°52'40"	376698.90	8901484.77
P59	P59 - P1	189.51	202°16'40"	376649.62	8901520.24

PLANO PERIMETRAL
ESCALA 1:1000

UTM-WGS 1984 datum, Zone 18 South, Meter; Cent. Meridian 75d W

MUNICIPALIDAD DEL CASERÍO DE LLANQUIPAMPA

PROYECTO: "ESQUEMA DE ACONDICIONAMIENTO URBANO DEL CASERÍO DE LLANQUIPAMPA 2023-2033"

PLANO: PLANO PERIMETRICO Y LOCALIZACION

PROYECTISTA: CASERÍO DE LLANQUIPAMPA

COORDINADOR: YONEL MAZ MILLAN

FECHA: ENERO - 2023

ESCALA: INDICADA